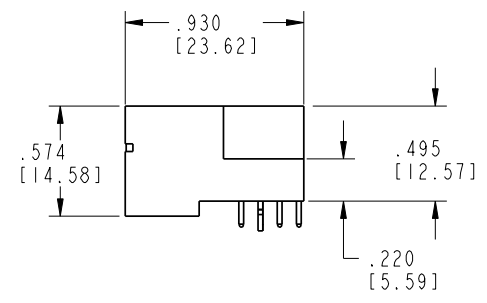
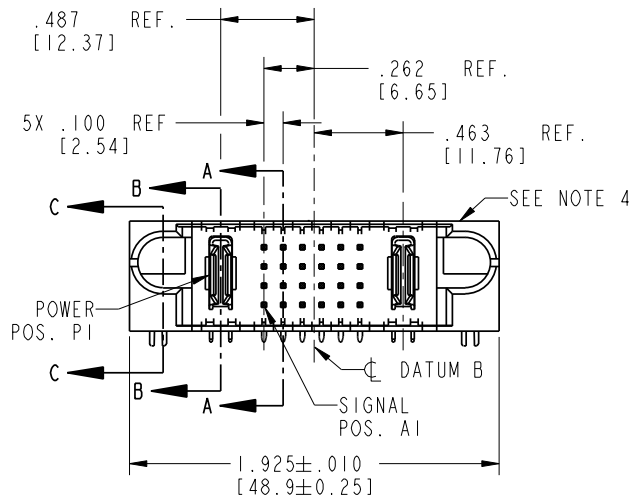
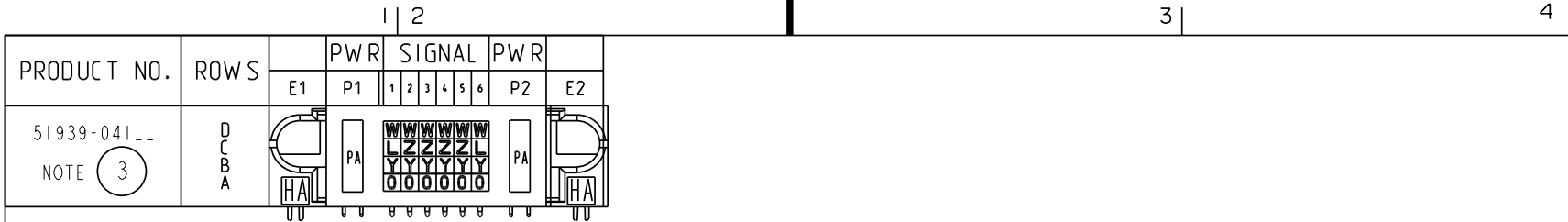


Tous droits strictement réservés. Reproduction ou communication o des liers interdite sous quelque forme que ce soit sans autorisation écrite du propriétaire. Propriété de c FCI. Droits de reproduction FCI.



All rights strictly reserved. Reproduction or issue to third parties in any form whatever is not permitted without written authority from the proprietor. Property of FCI. Copyright FCI.



CODE	DIM "M" MATING LENGTH	CONTACT TYPE
HA	N/A [N/A]	HOLD-DOWN
W	.254 [6.45]	SIGNAL
L	.170 [4.32]	SIGNAL
Y	.254 [6.45]	SIGNAL
O	.254 [6.45]	SIGNAL
Z	.254 [6.45]	SIGNAL
PA	N/A [N/A]	POWER

mat'l code				tolerances unless otherwise specified		CUSTOMER	
lir	ecn no.	dr	date	linear	angles	COPY	
A	V04-0122	MEM	1/27/03	.XX±.01/0.X±0.3	0°±2°	projection	
B	V04-1118	TAB	11/17/04	.XXY±.005/0.XX±0.13		INCH/MM	
C	DG06-0008	JMG	01/09/06	.XXX±.0020/0.XXX±0.051		scale	
D	DG06-0234	JMG	06/14/06			1:1	
				dr	M. MOSTOLLER	1/27/03	
				enrg	M. MOSTOLLER	1/27/03	
				chr	H. BREWBAKER	1/27/03	
				appd	M. MOSTOLLER	1/27/03	
sheet index	revision sheet	D 1	D 2	D 3	D 4		

FCI		www.fciconnect.com	
title		IP + 24S +1P	
product family		PwrBlade	
size	dwg no	code	
A	51939-041	213	
sheet		1 of 4	

1 | 2

Pro/E

PDM: Rev: D

STAT: Released

Printed: Aug 14, 2007

3 |

4

A

A

B

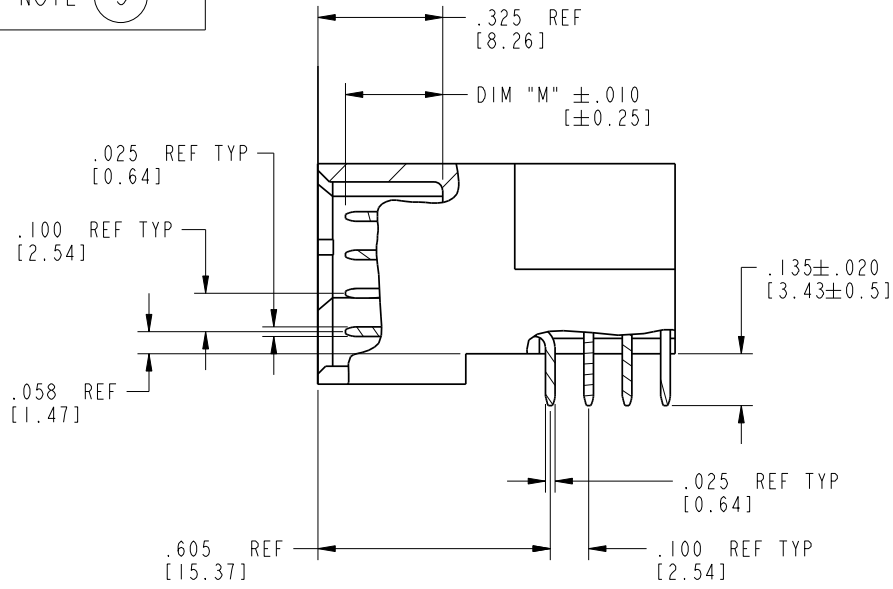
B

Tous droits strictement réservés. Reproduction ou communication o des liers interdite sous quelque forme que ce soit sans autorisation écrite du propriétaire. Propriété de c FCI. Droits de reproduction FCI.

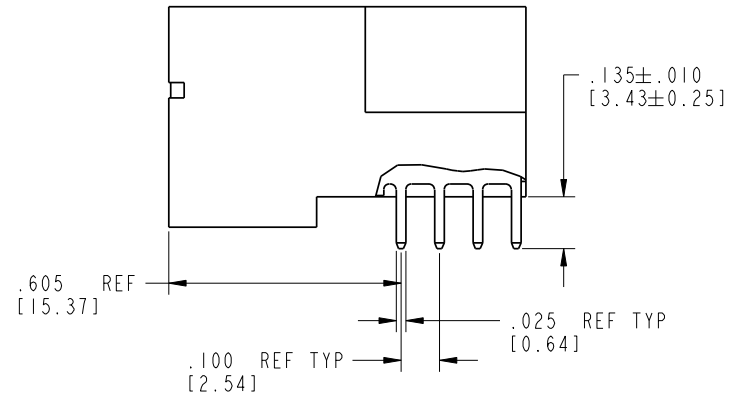


All rights strictly reserved. Reproduction or issue to third parties in any form whatever is not permitted without written authority from the proprietor. Property of FCI. Copyright FCI.

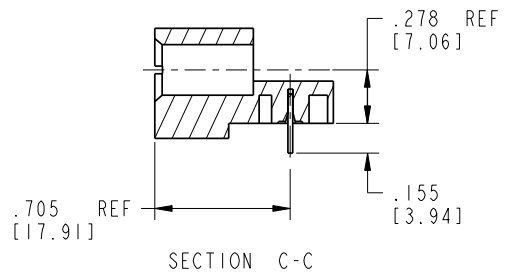
PRODUCT NUMBER
51939-041__
NOTE (3)



BROKEN-OUT SECTION A-A
SCALE 2:1



BROKEN-OUT SECTION B-B
SCALE 2:1



SECTION C-C

mat'l code		SEE NOTE 2		tolerances unless otherwise specified		CUSTOMER		FCI www.fciconnect.com	
lir	ecn no.	dr	date	linear	.XX±.01/0.X±0.3	COPY		title	
D					.XX±.005/0.XX±0.13	projection		IP + 24S +1P	
				angles	.XXX±.0020/0.XXX±0.051	INCH/MM		RIGHT ANGLE SOLDER HEADER	
					0°±2°	scale		product family	
				dr	M. MOSTOLLER 1/27/03	1:1		PwrBlade	
				engr	M. MOSTOLLER 1/27/03	A		code	
				chr	H. BREWBAKER 1/27/03	51939-041		213	
				appd	M. MOSTOLLER 1/27/03	size		sheet	
sheet index		revision sheet				A		2 of 4	

A

A

B

B

1 | 2

Pro/E

PDM: Rev: D

STAT: Released

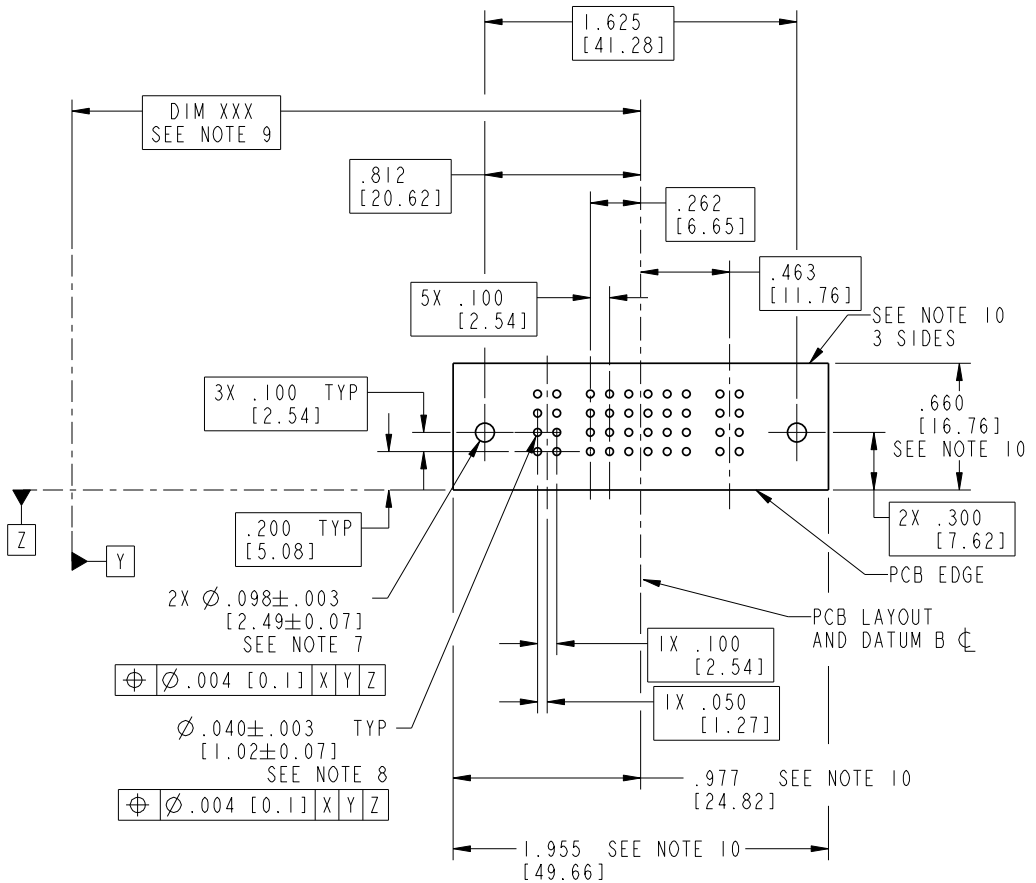
Printed: Aug 14, 2007

Tous droits strictement réservés. Reproduction ou communication o des liers interdite sous quelque forme que ce soit sans autorisation écrite du propriétaire. Propriete de c FCI. Droits de reproduction FCI.



All rights strictly reserved. Reproduction or issue to third parties in any form whatever is not permitted without written authority from the proprietor. Property of FCI. Copyright FCI.

PRODUCT NUMBER
51939-041__
NOTE (3)



RECOMMENDED PCB LAYOUT

mat'l code				SEE NOTE 2		tolerances unless otherwise specified		CUSTOMER		FCI www.fciconnect.com		
lir	ecn no.	dr	date	linear	.XX±.01/0.X±0.3		COPY		projection	title		
D					.XXY±.005/0.XX±0.13		INCH/MM			IP + 24S +1P RIGHT ANGLE SOLDER HEADER		
				angles	.XXX±.0020/0.XXX±0.051		INCH/MM		product family	code		
					0°±2°		scale			PwrBlade		213
				dr	M. MOSTOLLER	1/27/03	1:1		size	sheet		
				engr	M. MOSTOLLER	1/27/03	A			51939-041		3 of 4
				chr	H. BREWBAKER	1/27/03						
				appd	M. MOSTOLLER	1/27/03						
sheet index		revision sheet										

Tous droits strictement réservés. Reproduction ou communication o des liers interdite sous quelque forme que ce soit sans autorisation écrite du propriétaire. Propriété de c FCI. Droits de reproduction FCI.



All rights strictly reserved. Reproduction or issue to third parties in any form whatever is not permitted without written authority from the proprietor. Property of FCI. Copyright FCI.

1 | 2

3 |

4

PRODUCT NUMBER

51939-041__

NOTE (3)

NOTES:

1. DIMENSIONS AND TOLERANCES ARE IN ACCORDANCE WITH ASME Y14.5M, 1994 UNLESS OTHERWISE SPECIFIED.

CONNECTOR NOTES:

- 2. HOUSING MATERIAL: UL 94 V-0 GLASS FILLED
HIGH-TEMP THERMOPLASTIC
POWER CONTACT MATERIAL: COPPER ALLOY
SIGNAL PIN MATERIAL: COPPER ALLOY
- 3. 51939-041;51939-041LF;51939-041GLF PLATING SPEC. SEE PRINT:10064183
- 4. MANUFACTURER'S NAME, P/N, AND DATE CODE TO APPEAR ON THIS SURFACE.
- 5. PRODUCT SPECIFICATION GS-12-149.
APPLICATION SPECIFICATION BUS-20-067.

PCB NOTES:

- 6. ALL HOLE DIAMETERS ARE FINISHED HOLE SIZE.
- 7. MOUNTING HOLES, WHERE APPLICABLE, ARE UNPLATED.
- 8. $\varnothing .0453 \pm .0010$ [1.151 \pm 0.025] DRILLED HOLES PLATED WITH .0003 [0.008] MIN SnPb OVER .001 [0.03] TO .003 [0.08] Cu PLATING TO ACHIEVE $\varnothing .040 \pm .003$ [1.02 \pm .07] HOLE.
- 9. "DIM XXX" TO BE DETERMINED BY THE CUSTOMER.
- 10. CONNECTOR KEEP-OUT ZONE.

mat'l code		SEE NOTE 2		tolerances unless otherwise specified		CUSTOMER		www.fciconnect.com			
lir	ecn no.	dr	date	linear	.XX \pm .01/0.X \pm 0.3		projection	COPY			
D					.XXX \pm .005/0.XX \pm 0.13					title IP + 24S +1P RIGHT ANGLE SOLDER HEADER	
				angles	.XXX \pm .0020/0.XXX \pm 0.051			product family PwrBlade			
					$0^{\circ} \pm 2^{\circ}$			INCH/MM		code 213	
				dr	M. MOSTOLLER	1/27/03	scale	A	size 51939-041		
				enrg	M. MOSTOLLER	1/27/03				sheet 4 of 4	
				chr	H. BREWBAKER	1/27/03					
				appd	M. MOSTOLLER	1/27/03					
sheet index	revision sheet										

1 | 2

Pro/E

PDM: Rev: D

STAT US: Released

Printed: Aug 14, 2007